

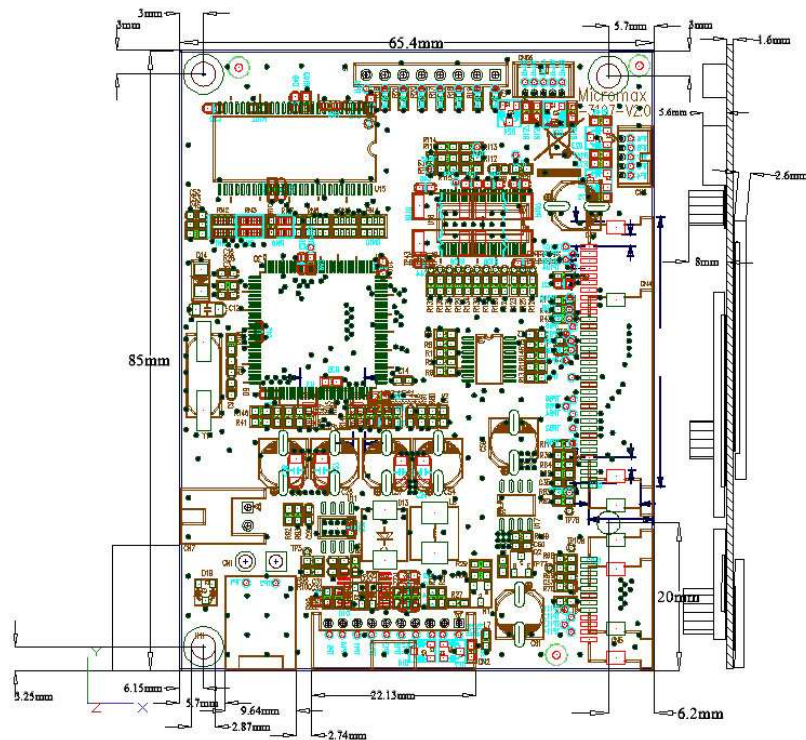
Interface Board for Thermal Printer Model No: IB-3107

Supported Print Head: FTP-637MCL411

Highlight

- 24V support operating voltage.
- Printing speed up to 150mm/s
- RS-232 communication speed up to 115200bps
- Support for USB2.0
- Compatible with POS commands
- Supports bar code and graphics
- Supported Fonts: ISO8859, ISO8859-2, Traditional Chinese(Big-5)
- Windows@2000/XP, Windows 7, Linux drivers
- Operating temperature: 14 to 140 °F (--10 to 60 °C)
- FCC Class B Compliant
- ESD: 4K Contact, 8K Air
- RoHS Compliant

■ Dimensions



■ **Control circuit board connector types**

Symbol	Name	Function
CN1	Power	24V DC INPUT
CN7	Power	24V DC INPUT
CN6	Keypad	LED KEYS Connector
CN2	USB/RS232	USB/RS232 Connector
C66	PAPER/E	Paper End Connector
CN11	637 HEAD	637 Print-Head Connector
CN12	637 CUTTER	637 Cutter Connector

■ **LED Status Indicator**

D1: ON (Green) - Ready
 OFF – Not Ready

■ **Connector for Pin Assignment**

1. CN1: DC Power Input (2PIN Header 4.2mm 90 degree)

No	Signal	I/O	Description
1	GND	I	GND
2	PWR_IN	I	DC 24V input

2. CN7: DC Power Input (2PIN Header 2.54mm 90 degree)

No	Signal	I/O	Description
1	PWR_IN	I	GND
2	GND	I	DC 24V input

3. CN6: KEYPAD (5PIN Header 1.25mm 90 degree)

No	Signal	I/O	Contents
1	GND	O	GND
2	LED1	O	ONLINE/ERROR(REDF)
3	LED2	O	POWER ON/READY(GREEN)
4	SW1	I	LINE_FEEDSWITCH
5	SW2	I	TEST_PRINT_SWITCH

4. CN2: RS232/USB (10PIN Header 2.0mm 90 degree)

No	Signal	I/O	Description
1	GND	O	USB GND
2	D+	I/O	USB Data +
3	D-	I/O	USB Data -
4	USB-VCC	O	USBVCC
5	TXD	O	RS232 TX(DB9-Pin3)
6	CTS	I	RS232 CTS(DB9-Pin8)
7	RXD	I	RS232 RXD(DB9-Pin4)
8	RTS	O	RS232 RTS(DB9-Pin7)

9	NC	NC	No Connection
10	GND	O	GND(DB9-Pin5)

5. CN66: Paper Near-End Sensor (5PIN Header 1.25mm 90 degree)

No	Signal	I/O	Description
1	GND	I	GND
2	PWDOWN_IR	I	Power down IR
3	RXD_IR	I	Receive
4	TXD_IR	O	Transmit
5	+3.3V	I/O	+3.3V

■ **Connector Pin of Mechanism(FPC)**

FTP-637MCL411

Thermal Head (CN11)

Part number: 52610-3071 Molex or equivalent

No	Name	Description
1	PHK	Cathode for photo Interrupter
2	VSEN	Ground power supply for paper sensor
3	PHE	Emitter for photo interrupter
4	VH	Head drive power
5	VH	Head drive power
6	VH	Head drive power
7	DI	Data input
8	/STB3	Strobe 3
9	/STB4	Strobe 4
10	VDD	Logic power
11	GND	Head ground
12	GND	Head ground
13	GND	Head ground
14	GND	Head ground
15	GND	Head ground
16	GND	Head ground
17	TM	Thermistor
18	/STB1	Strobe 1
19	/STB2	Strobe 2
20	/LAT	Data Latch
21	CLK	Clock
22	VH	Head drive power
23	VH	Head drive power
24	VH	Head drive power
25	SW	Platen open switch
26	SW	Platen open switch
27	MTA	Motor excite signal A
28	MT/A	Motor excite signal /A
29	MTB	Excitation signal B
30	MT/B	Excitation signal /B

Thermal Head (CN12)

Part number: 52610-0871 Molex or equivalent

No	Name	Description
1	VSEN	Paper sensor power
2	PHE	Emitter Photo interrupter
3	PHK	Cathode Photo interrupter
4	MT A	Motor excite signal A
5	MT /A	Motor excite signal /A
6	MT B	Motor excite signal B
7	MT /B	Motor excite signal /B
8	NC	Not connected

■ Specifications

Model Name	IB-3107				
Printing Method	Thermal Line Printing				
Print Speed	150mm/s				
Command	ESC/POS				
Character Fonts	ISO8859-1		ISO8859-2		Chinese(Big5)
	9x17	12 x 24	9x17	12 x 24	24x24
	Afrikaans, Albanian, Catalan, Danish, English, Faeroese, Finnish, French, German, Icelandic, Indonesian, Irish, Italian, Malayan, Norwegian, Portuguese, Rhaeto-Romanic, Scottish Gaelic, Spanish, Swahili, Swedish, Tagalog		Bosnian, Croatian, Hungarian, Polish, Slovak, Slovenian, Serbo-Croatian		Big-5
Density	203 dpi				
Bar Code	UPC-A, UPC-E, EAN13, EAN8, CODE39, ITF, CODABAR, CODE93, CODE128, QR Code				
Detectors	Paper end, Print head paper sensor, Print head overheat				
Memory	Flash		8MB		
	Working RAM		8MB		

※ Fonts by Arphic (文鼎科技), Copyright © Arphic Technology Co., LTD All Rights Reserved

■ Electrical specifications

Item	Condition	Min	TYP	Max	Unit
Input Voltage			24		V

■ Environmental Specifications

Item	Min	Typ.	Max.	Unit
Operating Temp	-10(14)		60(140)	°C (°F)
Storage Temp	-20(-4)	36(97)	85(185)	°C (°F)

■ Physical Specifications

Dimensions(W x D x H)	85 x65 x 12 mm (3.35" x 2.56" x 0.472")
Net Weight	31g (1.12oz)

■ **Options**

1. Cables

Name		Part Number	Length (mm)
Interface Cable (between board and equipment)	For Keypad(CON2)	E-CB-1705	155mm(6.1 inches)
	ForUSB/RS232 (CN12)	E-CB-2010	90mm (3.54 inches)
Power supply cable	DC-INPUT(P9)	E-CB-2502	90mm(3.54 inches)

2. Signal Input

	Part Number	Description
Signal Input PCB	B-SI-02-0134	Signal Input Board-USB, RS232-DC Jack

3. Signal Input

Name	Part Number	Description
I/F Keypad	B-KB-02-0135	Keypad for LEDS Keys

■ **Ordering Information**

Name	Part Number	Description
3" 24V Interface Board	IB-3107	3" Thermal Printer Interface Board for FTP-637MCL411 Series V2.0

Micromax International Corporation

Micromax International Corp.
 3F., No. 103, Sec. 2, Jiow-Jong Road
 Nei-Hu District
 Taipei Taiwan 11494
 Tel: (2) 2796-2789
 Fax (2) 2796-3889
 Web: www.micromax.com.tw

©2017 Micromax International Corp., All rights reserved. All trademarks or
 registered trademarks are the property of their respective owners.
 Rev. April 12, 2017