

Interface Board for Thermal Printer Model No: IB-3118

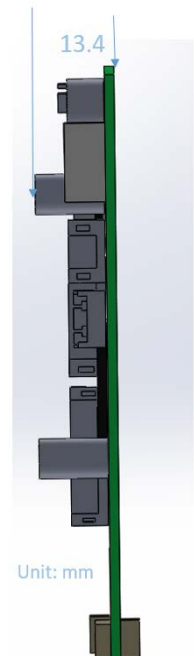
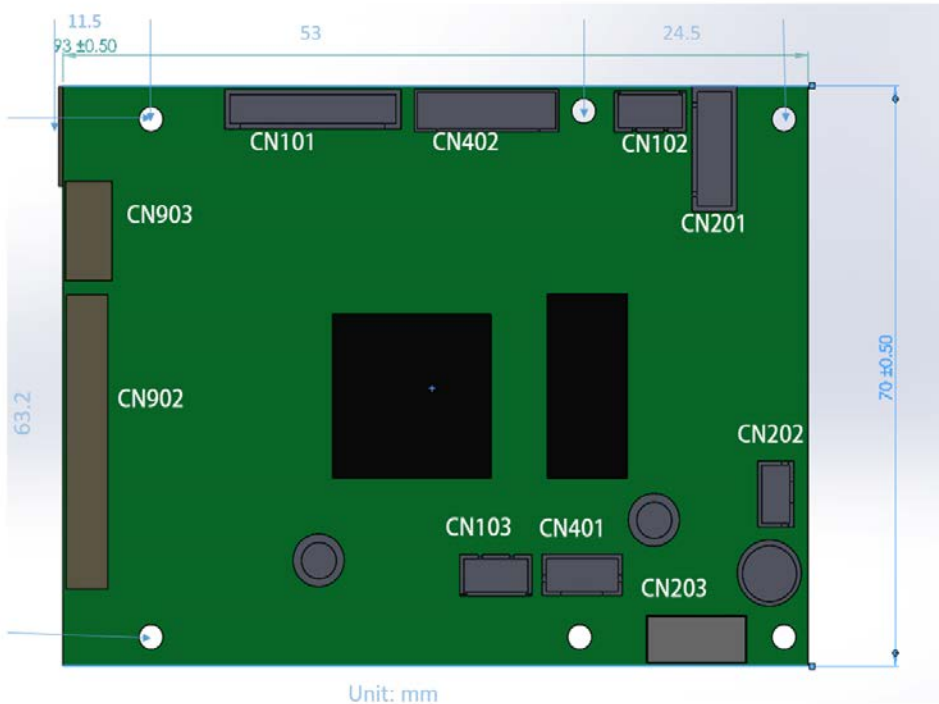
Supported Print Head: FTP-638MCL401

Highlight

- Support operating voltage: 7.2V-8.5V or 12V-24V.
- Printing speed up to 60mm/s(64 dots per line)
- RS-232 communication speed up to 115200bps
- Support for USB2.0
- Compatible with ESC/POS commands
- Supports bar code and graphics
- Supported Fonts: ISO8859, ISO8859-2, Traditional Chinese(Big-5)
- Windows®2000/XP, Windows 7, Linux drivers
- Operating temperature: 14 to 140 °F (-10 to 60 °C)
- FCC Class B
- ESD: 8KV Contact, 15KV Air
- RoHS Compliant



■ Dimensions



■ **Control circuit board connector types**

Symbol	Name	Function
CN201	POWER	12-24V DC Power Input
CN202	POWER	8.5V DC Power bypass connector
CN203	POWER	8.5V DC Power Input
CN101	USB/RS232	USB/RS232 Function Input
CN102	KEYPAD	Keypad Connector
CN103	RESERVED	Reserved
CN401	RESERVED	Reserved
CN402	RESERVED	Reserved
CN501	RESERVED	Reserved
J402	BOOT0	Boot selector
J502	BOOT1	Boot selector
CN902	FTP6X8 30P Connector	FTP-6x8MCL401 30 pin connector
CN903	FTP6x8 8P Connector	FTP-6x8MCL401 8 Pin Connector for 2"
CN904	FTP6x8 8P Connector	FTP-6x8MCL401 8 Pin Connector for 3"

■ **Connector for Pin Assignment**

CN201: Power Input (5 pin wafer connector pitch 2.5mm)

No	Signal	I/O	Description
1	DC Input	Power	12-24V Power Input
2	DC Input	Power	12-24V Power Input
3	NC	NC	NC
4	GND	Power	Ground
5	GND	Power	Ground

CN202: Power Input (3 pin wafer connector pitch 2.0mm)

No	Signal	I/O	Description
1	DC Input	Power	8.5V Power Output
2	NC	NC	NC
3	LOAD	Power	8.5V Load Circuit

Connect Pin1 and Pin3 when CN201 input 12V~24V.

Leave OPEN when CN203 input 8.5V.

CN203: Power Input (4 pin wafer connector pitch 2.5mm) Reserved for 8.5V input

No	Signal	I/O	Description
1	GND	Power	Ground
2	GND	Power	Ground
3	DC Input	Power	8.5V Power Input
4	DC Input	Power	8.5V Power Input

CN101: USB/RS232 Input (10 pin wafer connector pitch 2.0mm)

No	Signal	I/O	Description
1	GND	Power	GND(DB9-Pin5)
2	NC	NC	NC
3	RTS	RS232	RS232 RTS(DB9-Pin7)
4	RXD	RS232	RS232 RXD(DB9-Pin4)
5	CTS	RS232	RS232 CTS(DB9-Pin8)
6	TXD	RS232	RS232 TXD(DB9-Pin3)
7	USB 5V	USB	USB VCC 5V
8	USB Data-	USB	USB Data-
9	USB Data+	USB	USB Data+
10	GND	Power	Ground

CN102: Keypad Input (5 pin wafer connector pitch 1.25mm)

No	Signal	I/O	Description
1	GND	Power	Ground
2	LED1	LED	Red LED
3	LED2	LED	Green LED
4	SW1	Switch	Line Feed
5	SW2	Switch	Test

CN103: PNE (5 pin wafer connector pitch 1.25mm)

No	Signal	I/O	Description
1	GND	Power	GND
2	INT	I/O	I/O
3	SCL	I/O	I/O
4	SDA	I/O	I/O
5	3.3V	Power	DC 3.3V

CN401: Reserved (4 pin wafer connector pitch 2.0mm)

No	Signal	I/O	Description
1	RESERVED	I/O	Reserved
2	RESERVED	I/O	Reserved
3	RESERVED	I/O	Reserved
4	GND	Power	Ground

CN402: Reserved (8 pin wafer connector pitch 2.0mm)

No	Signal	I/O	Description
1	RESERVED	I/O	Reserved
2	RESERVED	I/O	Reserved
3	RESERVED	I/O	Reserved
4	RESERVED	I/O	Reserved
5	RESERVED	I/O	Reserved
6	RESERVED	I/O	Reserved
7	RESERVED	I/O	Reserved
8	GND	Power	Ground

CN501: Reserved (8 pin connector pitch 2.50mm)

No	Signal	I/O	Description
1	RESERVED	I/O	Reserved

2	RESERVED	I/O	Reserved
3	RESERVED	I/O	Reserved
4	RESERVED	I/O	Reserved
5	RESERVED	I/O	Reserved
6	RESERVED	I/O	Reserved
7	RESERVED	I/O	Reserved
8	GND	Power	Ground

J402: Boot0 (2 pin wafer connector pitch 2.5mm)

No	Signal	I/O	Description
1	VCC	I	3.3V
2	BOOT0	I	Boot0 pin

J502: Boot1 (2 pin wafer connector pitch 2.5mm)

No	Signal	I/O	Description
1	VCC	I	3.3V
2	BOOT1	I	Boot1 pin

CN902: Thermal printer head (30 pin FPC connector pitch 1.0mm, 90 degree)

No	Signal	Description
1	PHK	Cathode for photo Interrupter.
2	VSEN	Paper sense power.
3	PHE	Emitter for photo interrupter.
4	VH	TPH Power
5	VH	TPH Power
6	DI	Data In
7	CLK	Clock
8	GND	Ground
9	GND	Ground
10	STB6	Strobe 6
11	STB5	Strobe 5
12	STB4	Strobe 4
13	Vdd	Vdd
14	TM	Thermal Head
15	TM	Thermal Head
16	STB3	Strobe 3
17	STB2	Strobe 2
18	STB1	Strobe 1
19	GND	Ground
20	GND	Ground
21	LAT	Latch
22	DO	Data Out
23	VH	TPH Power
24	VH	TPH Power
25	SW	Platen Release Switch
26	SW	Platen Release Switch
27	MTA	Excitation signal A.
28	MT/A	Excitation signal /A.

29	MTB	Excitation signal B.
30	MT/B	Excitation signal /B.

CN903: 2" Thermal printer head (8 pin FPC connector pitch1.0mm,90 degree)

No	Signal	Description
1	VSEN	Home Position Sensor Power
2	PHE	Emitter for Photo Interrupter
3	PHK	Cathode for Photo Interrupter
4	MT_A	Excitation Signal A
5	MTA	Excitation Signal /A
6	MT_B	Excitation Signal B
7	MTB	Excitation Signal /B
8	NC	NC

CN904: 3" Thermal printer head (8 pin FPC connector pitch1.0mm,90 degree)

No	Signal	Description
1	VSEN	Home Position Sensor Power
2	PHE	Emitter for Photo Interrupter
3	PHK	Cathode for Photo Interrupter
4	MT_A	Excitation Signal A
5	MTA	Excitation Signal /A
6	MT_B	Excitation Signal B
7	MTB	Excitation Signal /B
8	NC	NC

■ **LED Status Indicator**

D202: 12V-24V Power (RED)

D203: 3.3V Power (RED)

■ Specifications

Model Name	IB-3118				
Printing Method	Thermal Line Printing				
Print Speed	60mm/s(64 dots / line)				
Command	Compatible with ESC/POS commands				
Character Fonts ※	ISO8859-1		ISO8859-2		Chinese(Big5)
	9x17	12 x 24	9x17	12 x 24	24x24
	Afrikaans, Albanian, Catalan, Danish, English, Faeroese, Finnish, French, German, Icelandic, Indonesian, Irish, Italian, Malayan, Norwegian, Portuguese, Rhaeto-Romanic, Scottish Gaelic, Spanish, Swahili, Swedish, Tagalog		Bosnian, Croatian, Hungarian, Polish, Slovak, Slovenian, Serbo-Croatian		Big-5
Density	203 dpi				
Bar Code	UPC-A, UPC-E, EAN13, EAN8, CODE39, ITF(Interleaved 2 of 5), CODABAR, CODE93, CODE128, QR Code				
Detectors	Paper end, Cover, Print head overheat and Paper jam.				
Memory	Flash		8MB		
	RAM		8MB		

※ Fonts by Arphic (文鼎科技), Copyright © Arphic Technology Co., LTD All Rights Reserved

■ Environmental Specifications:

Item	Min	Typ.	Max.	Unit
Operating Temp	-10(14)		60(140)	°C (°F)
Storage Temp	-20(-4)	36(97)	85(185)	°C (°F)

■ Physical Specifications:

Dimensions(L x W x H)	93 x 70 x 16.4 mm (3.66" x 2.76" x 0.65")
------------------------------	---

Net Weight	35g (1.23oz)
-------------------	---------------

■ **Ordering Information**

Name	Part Number	Description
3" Interface Board	IB-3118	3" Thermal Printer Interface Board for FTP-638MCL401 Series

Micromax International Corporation

Micromax International Corp.
3F., No. 103, Sec. 2, Jiow-Jong Road
Nei-Hu District
Taipei Taiwan 11494
Tel: (2) 2796-2789
Fax (2) 2796-3889
Web: www.micromax.com.tw

©2017 Micromax International Corp., All rights reserved. All trademarks or registered trademarks are the property of their respective owners.
Rev. March 24, 2017